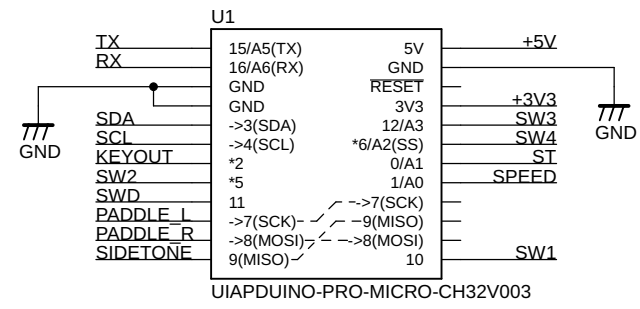
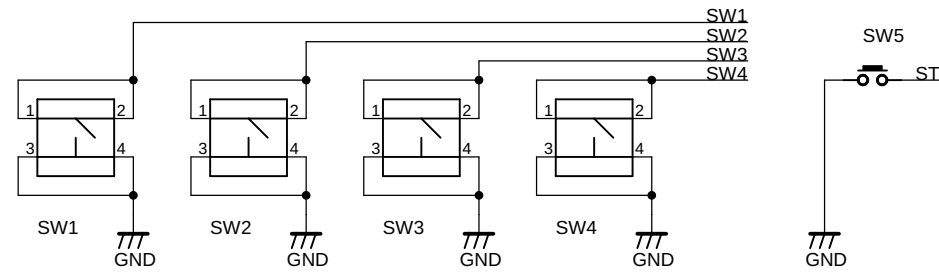


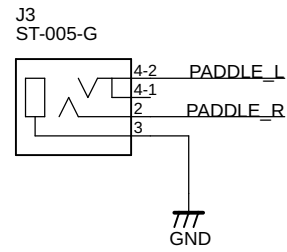
UIAPduino



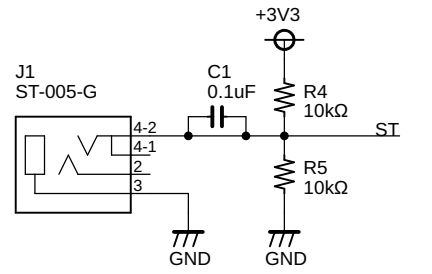
Switch



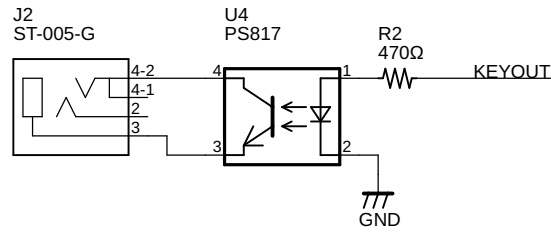
Paddle Input



Straight Input

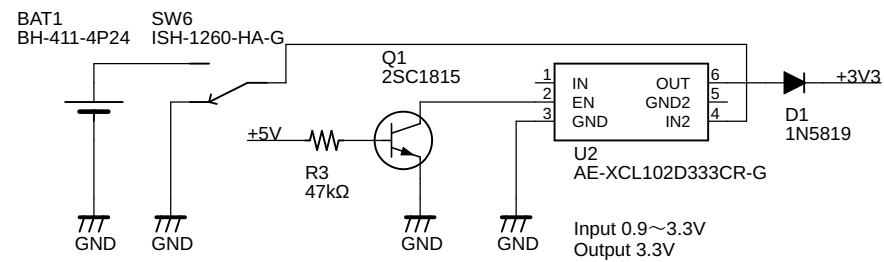


Key Output



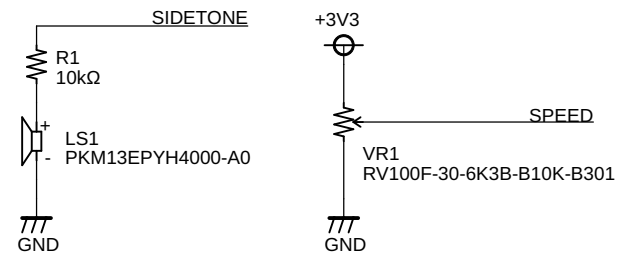
C1, R4, R5 is optional for receiver input

Battery Connection

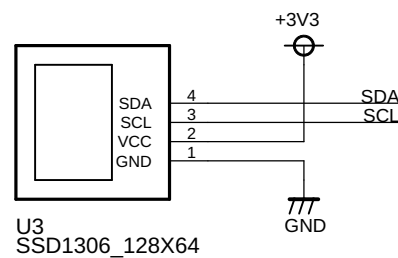


When EN is Low, U2 is disabled

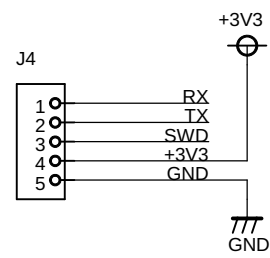
Speaker Speed Volume



OLED (I2C)



Debug



TITLE: KEYER DS (UIAPduino) v19

Document Number:

REV:

Date: 2026/05/15 22:40

Sheet: 1/1